

Chemical Grout Injection



Chemical Grout Injection is a process of injecting a near water-viscosity liquid under low pressure, into cohesionless soil to create a solid stonelike mass.

If your property matches the appropriate geological conditions for this procedure, a chemical injection formula would be chosen by your engineer to be pumped under low pressure into the loose soils. Most urethane injection procedures are completed in less than 1 day!



Secure Foundation Systems, Inc. only uses Uretek ICR to perform 100% of their urethane injection procedures!

More "Secure" Services

Pressure Grouting, Foundation Underpinning, and Chemical Grout Injection are just a few of our most popular services, but Secure Foundation Systems, Inc. has a variety of services to fit your needs including:

- Slurry Grouting
- New Construction Underpinning
- Grouted Injection Pier Systems
- Concrete Slab Jacking
- Drainage Relief Systems
- Cosmetic Restoration through **Secure Restoration Systems**. Learn more at www.securerestorations.com.

Visit www.securefsi.com for more information about SFSI.



Florida State Certified General Contractor
#CGC1514283

Mailing Address

P.O. Box 1796
Ocala, FL 34478-1796

Phone

352.671.9191

Fax

352.671.9192

Web

www.securefsi.com

"Securing Florida" With Multiple Locations

SFSI North

352.671.9191
Ocala, FL

SFSI South

352.593.7531
Spring Hill, FL

SE HABLA ESPAÑOL

Proud Member of...



"The Sinkhole Experts"



The Secure Advantage

As a State Certified General Contractor, **Secure Foundation Systems, Inc.** focuses on providing customers with unparalleled service, innovative technology and a truly professional experience.



SFSI Staff & Sales Team

Professional Experience

We offer more than just foundation remediation services. While always working to achieve the engineer's specifications, we never forget the client's need for "security," both in our workmanship and in the long term elimination of their geological issue.

Unparalleled Service

As a customer oriented business, educating and reassuring clients is just as important as repairing their foundation.

Innovative Technology

Our state-of-the-art equipment has been specifically designed to exceed the industry's standards as well as to optimize efficiency and accuracy.

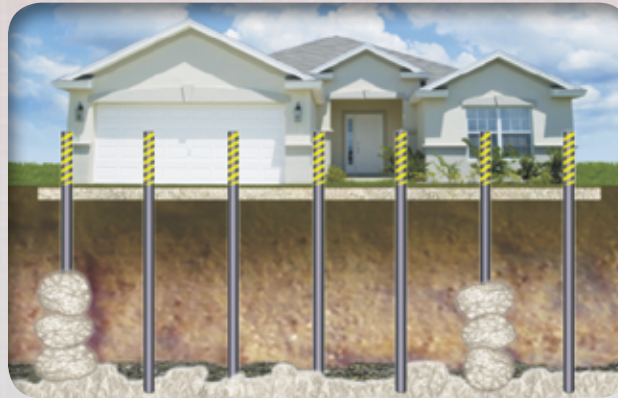


"Secure" Services



At Secure Foundation Systems, Inc. we strive to offer a variety of services designed to help property owners all over Florida alleviate the affects of sinkhole damage.

Pressure Grouting



When used for sinkhole remediation, Pressure Grouting is an effective procedure used to seal off the collapsed or eroded limestone surface and fill the voids directly above the problem soils.

Pressure Grouting is a process of injecting a cement grout mixture under high pressure, (250-300 PSI) through a series of injection points around your home. Steel grout casings are drilled to limestone, which allows the grouts application to begin at that depth.

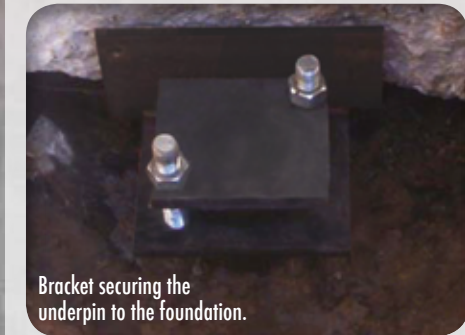
As the grout is pumped in controlled increments, the soil is compacted, filling in fissures and voids along the way as the steel grout casings are pulled upward. During the pressure grouting program the steel casings will be extracted and your yard returned to its original state. This process generally takes 1 to 2 weeks.

Foundation Underpinning



All applications of steel underpins demand the pile to be driven or drilled to competent capacity and/or bedrock and secured to the foundation with brackets capable of bearing at least twice the load necessary to secure the structure. All brackets utilized in residential and commercial projects, by Secure Foundation Systems, Inc., have been tested and approved by the manufacturer.

All steel underpins are installed in specific increments around the perimeter of your building. The type of steel underpins utilized are chosen by your engineer from an array of processes available.



Bracket securing the underpin to the foundation.

All of the foundation brackets that we install are fully adjustable. Any vertical adjustment later required can be easily accomplished with no adverse impact on the property.

 Continued on back.